



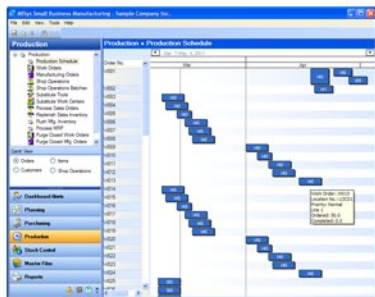
Basic Manufacturing

Get control of your manufacturing inventory. Save time, eliminate errors.

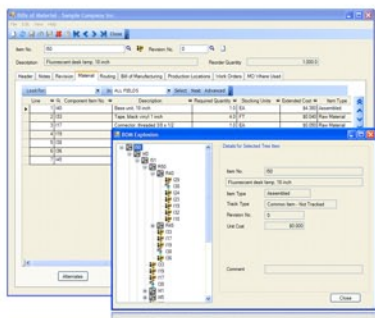
Seamless integration with the most popular accounting software



Dashboard Navigation and Alerts



Graphical drag-and-drop production scheduling



Multilevel BOMs – up to 16 levels deep

WHAT'S IN BASIC MANUFACTURING?

- Manufacturing Inventory – Raw Materials and WIP
- Item Master Files
- Supplier Information
- Bills of Material, 16 levels deep
- Multiple Warehouse Locations
- Work Orders
- Production Schedule

FUNCTIONALITY

- Use MISys to track raw materials and Work In Process (WIP).
- Create, maintain and revise multi-level Bills of Material (BOM) with full explosion to 16 levels.
- Maintain physical inventory on a net-change basis using cycle counting, eliminating the agony of annual inventory counts.
- Utilize standard, average, LIFO or FIFO costing methods that match your accounting practices.
- Generate Work Orders to document and track production activity.
- Create personalized alerts to warn of critical events and status in your operation.
- Track inventory in multiple warehouse locations. Move inventory from one location to any other.
- Maintain inventory levels with minimum, maximum and reorder points.
- Instantly display transaction history, where items are used (BOM Implosion) and outstanding order status.
- Access over 150 standard reports, or create your own reports using an industry-standard report writer – Crystal Reports.
- Establish and maintain “resources” used in production such as labor, electricity, consumable supplies, water.
- Utilize full “backflushing” to manage assembly inventories, automatically adjusting the inventory of component parts.
- Easily change the schedule of the production floor using a drag and drop graphical Gantt chart.
- Roll up cost adjustments to items through all BOM levels.
- Use the Multi-Currency capabilities to specify your home currency and the specific currency for any supplier.
- Identify physical inventory variances and valuation variances.
- Embed detailed item notes or attach a document and picture to any item record.
- Transfer manufacturing sub-ledger entries to GL at fiscal period end.
- Perform “what-if” inventory checks based on proposed transfer orders, and convert to purchase and/or production orders.
- Add an unlimited number of custom fields to the master files.

